


# PRO SERIES RGB COLOUR CHANGING LED TAPE, RGB+WW 24V 60LED 19.2W P/M (5M REEL), IP65

| SKU: PS60RGBWW-IP65

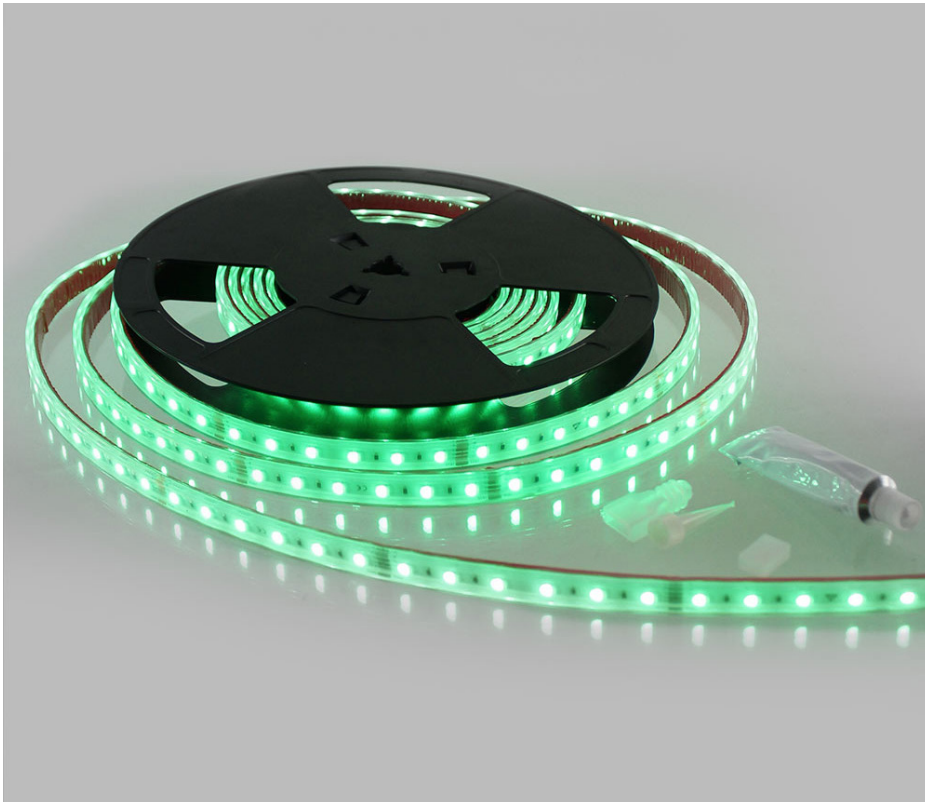


ULTRA LEDES

 [ultraleds.co.uk](http://ultraleds.co.uk)

 0800 088 3300

 [orders@ultraleds.co.uk](mailto:orders@ultraleds.co.uk)



## FEATURES & BENEFITS

- Highest quality professional standard parts to ensure stability, efficiency and reliability in operation
- Dedicated Warm White 3000K LED Chip
- DMX Controllable
- Need a custom length?  
We can cut our tapes to your exact specification

IP65



24V

14mm  
Tape Width



## TECHNICAL INFORMATION

### Tape Specifications

SKU Code	PS60RGBWW-IP65
Voltage	24V
Watts p/M	19.2W p/M
Rated Current	0.7A p/M
No. of LEDs p/M	60 p/M
Colour	RGB + WW 3000K
IP Rating	IP65
Lumens p/M	Red 87LM Green 207LM Blue 67LM White 3000K 344LM RGBW (All Colours) 703LM
Beam Angle	125°
PCB Width	14mm
PCB Thickness	2.1mm
Cut Points	Every 100mm
Heat Sink	FPCB 2OZ
Min Bend Diameter	Ø60mm
Dimmable	Yes
Operating Temp	-25°C to +40°C
Average Lifespan	Upto 25000 Hours
Certification	CE, UL, RoHS, ISO 9001
Guarantee	5 Years

### Driver Requirements

1 Metre	> 19.2W
2 Metres	> 38.4W
3 Metres	> 57.6W
4 Metres	> 76.8W
5 Metres	> 96W

## DESCRIPTION

Perfect for display lighting and designed for installation into wider channels with an internal width of 12mm or more.

Ideal for creating eye-catching, professional standard colour changing lighting displays. Compatible with standard and professional RGBW LED controllers as well as being DMX Controllable. Capable of a maximum continuous run of up to 5 metres at 24 volts based on a 10% voltage drop after 5 metres. Complete with a 3m self adhesive backing

We also offer bespoke cut to lengths services, please get in touch for more details.

### What Driver do I need?

We have many easy to use compatible drivers available in various wattages. To work out what driver you will need for each length of LED you can simply multiply the wattage of the tape by the length of LED strip you will be using, this will give you the total wattage the LED strip requires, then simply choose a driver which is at least 10% above this figure.

For this tape range you will require a driver which is above the below figures.

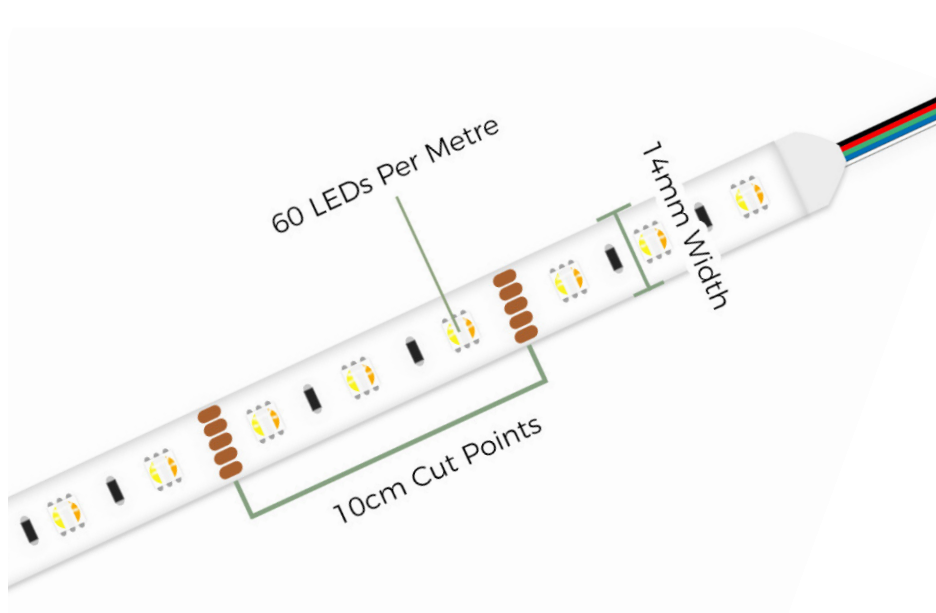
1 metres – More than 19.2w

2 metres – More than 38.4w

3 metres – More than 57.6w

4 metres – More than 76.8w

5 metres – More than 96w



**TAPE DIAGRAM**