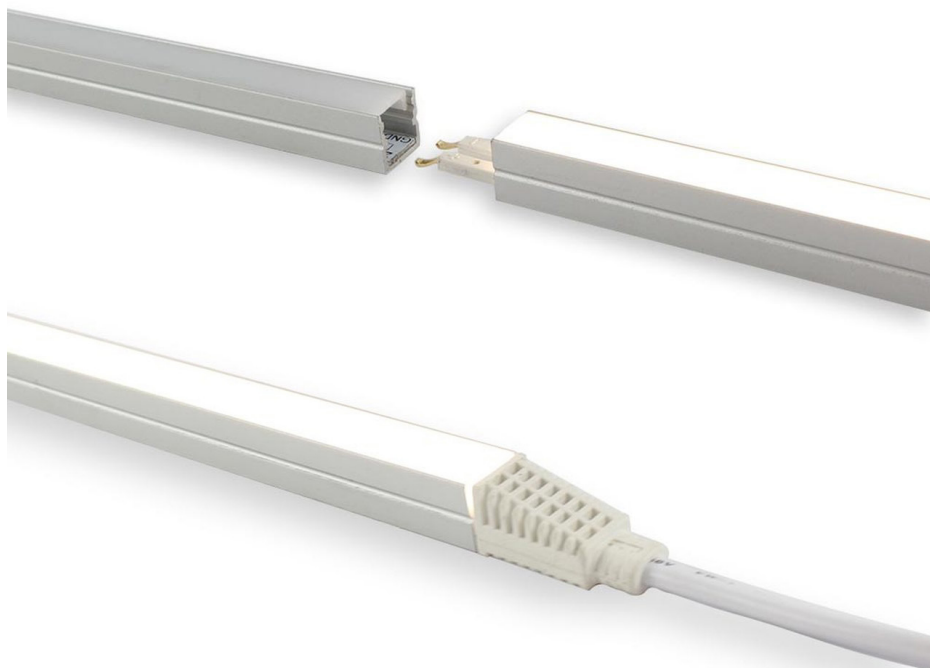


# EASY TO USE 400MM LINKABLE LED LIGHT BAR, WARM WHITE 3000K, 12V

| SKU: ROM-LIN4-WW



IP20

3000  
K

12V

SILVER

CE

RoHs

3YR  
Guarantee

## TECHNICAL INFORMATION

### Specification

SKU Code	ROM-LIN4-WW
Voltage	12V
Wattage	9.6W
Length	400mm
Colour	Warm White
Colour Temperature	3000K
IP Rating	IP20
Lumens p/M	484lm
CRI	>80
Material	Aluminium
Cable Length	500mm
Operating Temp	-25°C to +45°C
Lifespan	50000 hours
Dimmable	Yes
Guarantee	3 Years

### Driver Requirements

1 Metre	> 11W
2 Metres	> 21W
3 Metres	> 31W
4 Metres	> 41W
5 Metres	> 51W



ULTRA LEDs



ultraleds.co.uk



0800 088 3300



orders@ultraleds.co.uk

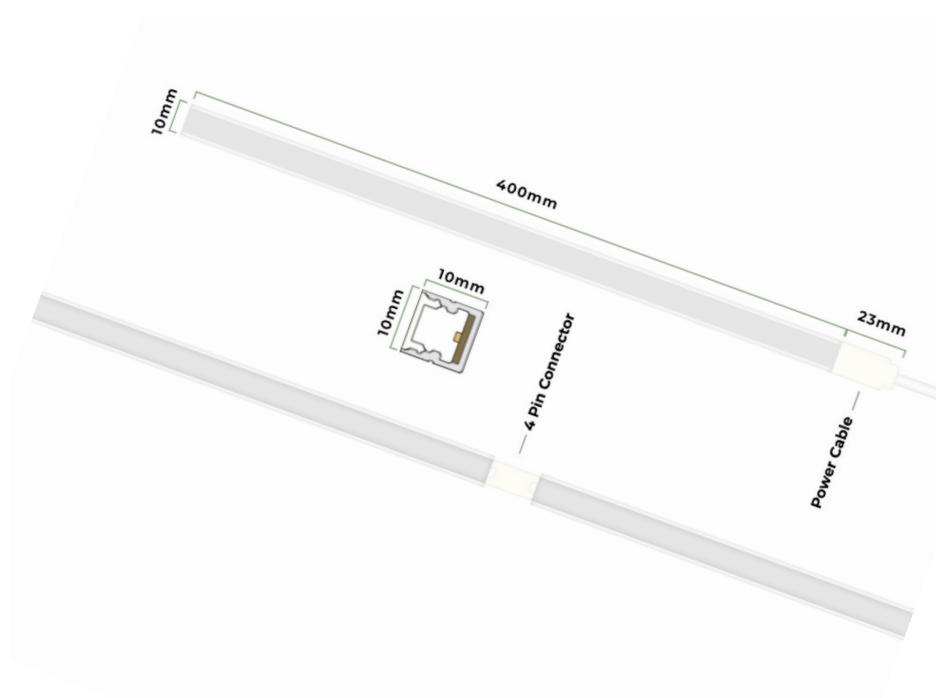
## FEATURES & BENEFITS

- Easy to install and featuring the low-energy benefits of LED technology, our linkable light bar range allows you to achieve custom lengths of linear lighting
- High quality, high brightness
- Compatible with Syndeo Plug & Play installation system
- Need a custom length?  
We can manufacture our lightbars to your exact specification

## DESCRIPTION

Easy to install and featuring the low-energy benefits of LED technology, our linkable light bar range allows you to achieve custom lengths of linear lighting. Simply connect multiple bars together using the push connector available at checkout and mount to the desired surface using the included mounting brackets. Compatible with our Syndeo plug and play furniture lighting system, this high quality light bar can be powered using our Syndeo 24W driver for easy installation – simply plug in and go. A high brightness, high quality light output makes this slimline light bar perfect for under cabinet lighting in your kitchen.

Available in either warm white or neutral white and in 300mm, 400mm and 600mm interconnectable lengths. The Maximum interconnectable length when installed using recommended 24W driver is 2000mm.



**LIGHT BAR DIAGRAM**