

Precautions

Installation Notes

- Install in accordance with the IEE wiring regulations and building regulations.
- This product must be installed by a suitably competent person.

Electrical

- Do not connect directly to mains electrical supply.
- Switch the power off at the mains supply before installing or maintaining this fitting.
- Ensure others cannot restore the electrical power supply without your knowledge.
- Ensure the product is in good working condition. If there is visible damage do not use.
- This product must be used with a good quality constant voltage LED driver. Ensure that the voltage output of the driver matches rated voltage of the LED flex.
- Connect the LED flex with correct polarity. Refer to the 'wiring' section for help.
- Ensure that the power capacity of the LED driver is greater than the total load of all the LED flex connected to it.
- The LED flex and cable should be protected by a fuse or equivalent device installed between the driver and LED flex and as close to the driver as possible.
- Ensure that the current capacity of cable connecting the LED flex to the driver is greater than the maximum drawn by the LED flex and the cut off of any over-current protection (fuse).

Mechanical

- Do not use the product if damaged. Do not use with worn or damaged wires or components.
- The product will generate heat during use. It should be installed in a well ventilated location on a smooth surface. Fully uncoil the LED flex. Do not cover or conceal.
- The LED flex should be mechanically supported with the recommended mounting accessories.
- Do not twist or stretch the LED flex. Only bend following the products bend direction. Do not bend the LED flex below it's minimum bend radius.
- Protect the LED flex from mechanical damage. Take care not to dislodge any components during installation. Ensure that wires connecting the LED flex cannot be pulled.

Environmental

- The product should be used in an environment where the ambient temperature is between 0°C ~ +45°C.
- The temperature of the LED flex should never exceed 45°C when in operation.
- Connectors must be assembled correctly in order to obtain a IP65 rating. Not suitable for permanent outdoor installation.
- Only install in a location free from chemicals, gases and flammable materials.
- Do not install in locations where it is subject to continuous movement.

Product Warranty

1. A warranty period is provided for products in normal use. For any faults arising during the period that are confirmed to be quality related by inspection by the company, a product of the same specification will be replaced for free.
2. The warranty does not cover any of the following:
 - (1) Any product damage due to usage not allowed in the instructions.
 - (2) Any product damage due to disassembling or wrong operation by the user.
 - (3) Severe appearance damage or deformation of the product.

IMPORTANT

- Please read these instructions before commencing any work.
- Please retain these instructions for future reference.
- Please refer to product listing for detailed information.
- Remove all packaging before connecting to power supply.

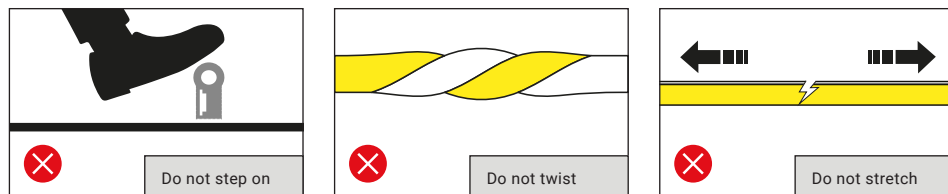
LED Flex

► Essential Pixel Horizontal Bend

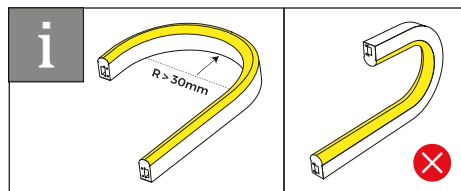
User Manual



Precautions

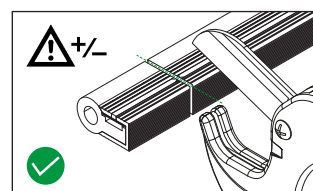


Tolerance & Bend



- ▶ Minimum bend radius: 30mm
- ▶ Minimum bend diameter: 60mm
- ▶ Horizontal bend only.

Cutting

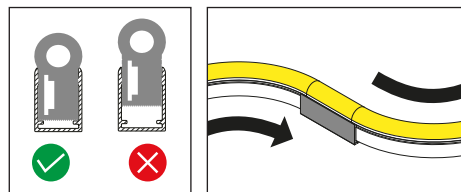


NOTE:
An end cap must be fitted after cutting.

Straight cut along cutting position

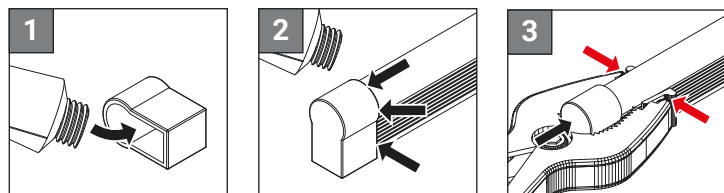
TIP: we recommend using a pipe cutter to cut the LED flex. Use one firm press to cut cleanly through.

Mounting / Installation



1. Install mounting channel with countersunk screws. Use appropriate fixings depending on the mounting surface.
2. Ensure that the mounting channel is securely held.
3. Install the LED flex in the correct position making sure it is properly seated in the mounting channel.
4. Use multiple mounting brackets to achieve bends and shapes with the LED flex.
5. We recommended installation be carried out by at least 2 people.

Fitting End Cap



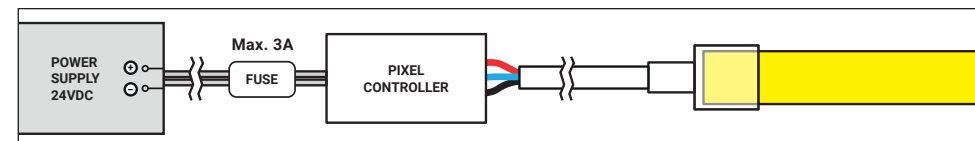
Apply glue inside the power cap and press together.

Apply a bead of glue around the edge of end cap.

Hold the end cap in place with a clamp. Grip the side of the LED flex, not the end cap.

NOTE: Allow 2-3 hours before handling and 24 hours for the glue to completely dry. Must not be exposed to moisture until the glue has completely dried. Use the correct glue. Do not use bathroom silicone sealant. Once glue has dried, inspect both ends and confirm that the endcap is fully sealed to the LED flex.

Wiring



WARNING: This product must be installed by a suitably competent person. Check polarity (+/-) is correct before turning on.

WARNING: Never connect DATA to +V.

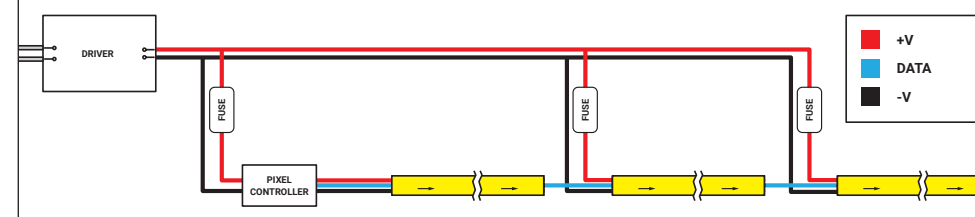


24V RGB		
LED	WIRE	CONTROLLER
+V	Red	+V
DI	Blue	DATA
GND	Black	-V (GND)

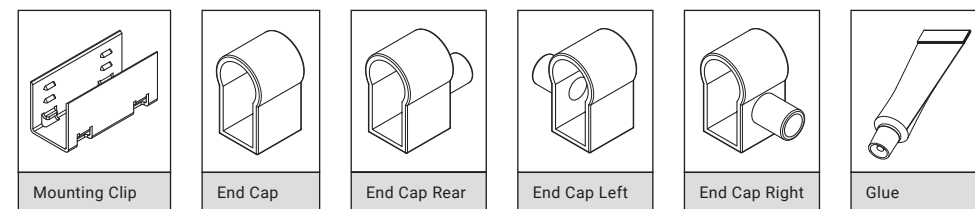
NOTE: The LED flex is labelled with data arrows showing data flow. Ensure the data flows in the correct direction.



NOTE: Achieve longer runs of LED flex by following the diagram below.



Accessories



Troubleshooting

- ▶ **LED flex doesn't respond to controller**
Check that the data output of the controller is connected to the data input of the LED flex.
Check the data arrows labelled on the LED flex. Ensure the data flows in the correct direction.
- ▶ **The LED flex lights but the animation is distorted**
Check that the IC type setting on the controller matches the IC type of the LED flex.
- ▶ **LED flex lights single colours but animation is distorted.**
Check that the GND of each LED flex is connected to the GND on the controller.
Check that the length of the cables between the controller and DIN on the LED flex are shorter than 2m.

NOTE: The LED flex is supplied with a cable at each end. One end is the data input and the other is data output. If you cut the LED flex one section will now no longer have a data input and a cable must be soldered on. The LED flex will not operate if a data output cable is connected to the controller. For more information see our Pixel Soldering Guide.